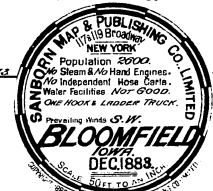
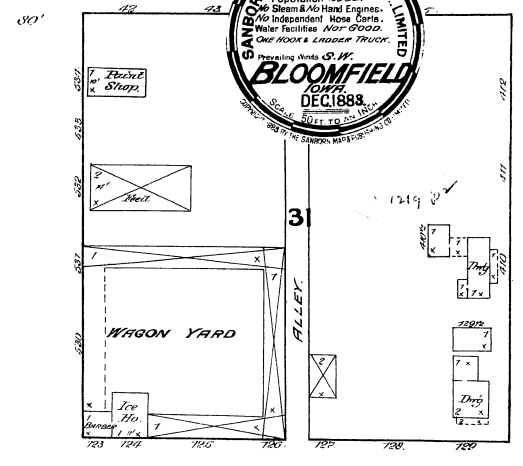
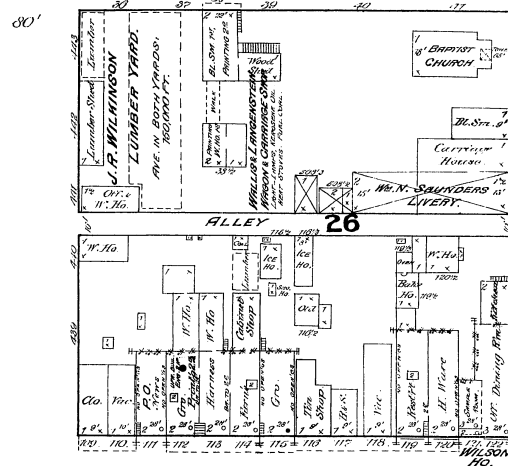
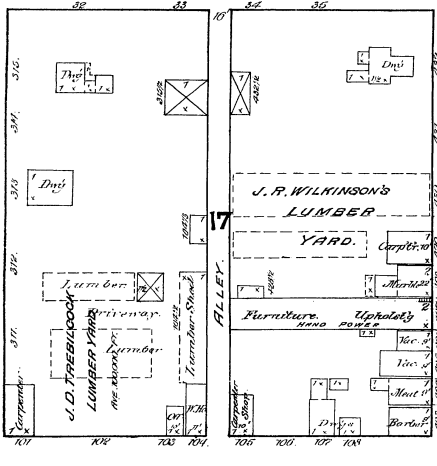
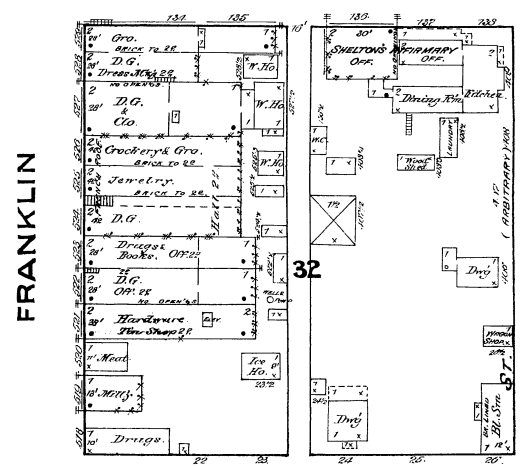
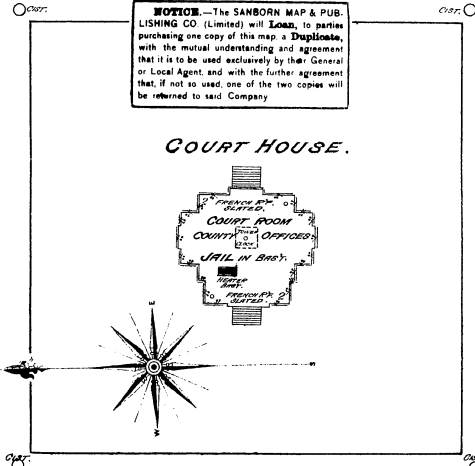
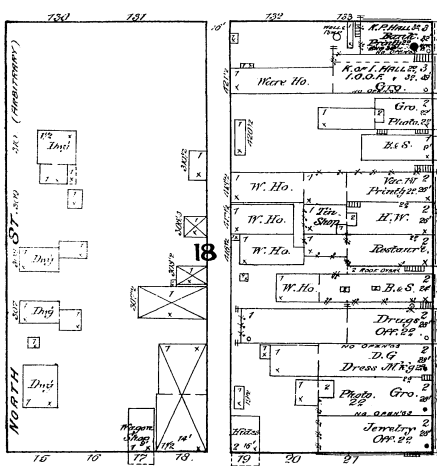


DODGE

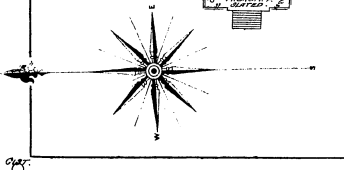
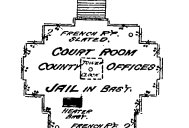


WASHINGTON

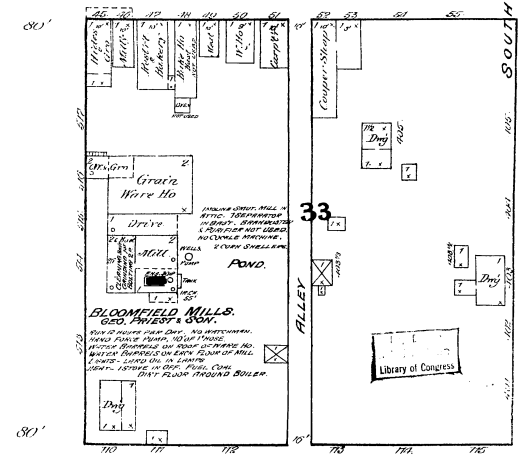
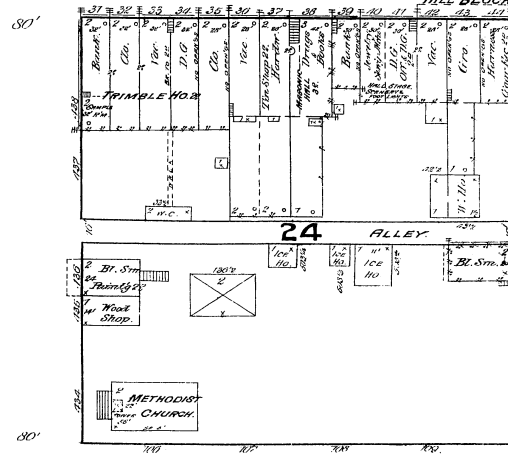
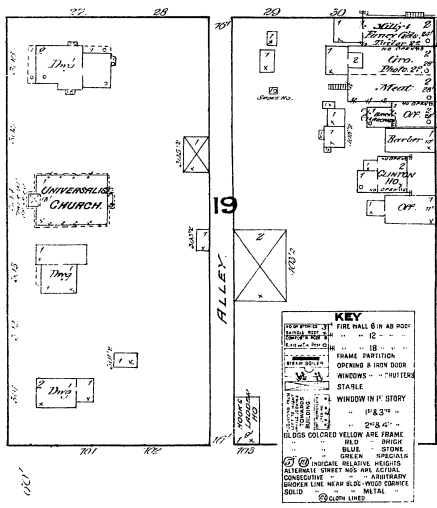


NOTICE—The SANBORN MAP & PUBLISHING CO. (Limited) will **Loan**, to parties purchasing one copy of this map a **Duplicate**, with the mutual understanding and agreement that it is to be used exclusively by that General or Local Agent and with the further agreement that, if not so used one of the two copies will be returned to said Company.

COURT HOUSE.



MADISON



KEY
 THE WALL 6 IN AS POOR
 12 IN AS GOOD
 18 IN AS BEST
 FRAMED PARTITION
 OPENING A HIGH DOOR
 WINDOWS - CHUTE
 STAIRS
 WINDOW IN 1ST STORY
 1ST & 2ND STORY
 2ND & 3RD STORY
 3RD & 4TH STORY
 4TH & 5TH STORY
 5TH & 6TH STORY
 6TH & 7TH STORY
 7TH & 8TH STORY
 8TH & 9TH STORY
 9TH & 10TH STORY
 10TH & 11TH STORY
 11TH & 12TH STORY
 12TH & 13TH STORY
 13TH & 14TH STORY
 14TH & 15TH STORY
 15TH & 16TH STORY
 16TH & 17TH STORY
 17TH & 18TH STORY
 18TH & 19TH STORY
 19TH & 20TH STORY
 20TH & 21ST STORY
 21ST & 22ND STORY
 22ND & 23RD STORY
 23RD & 24TH STORY
 24TH & 25TH STORY
 25TH & 26TH STORY
 26TH & 27TH STORY
 27TH & 28TH STORY
 28TH & 29TH STORY
 29TH & 30TH STORY
 30TH & 31ST STORY
 31ST & 32ND STORY
 32ND & 33RD STORY
 33RD & 34TH STORY
 34TH & 35TH STORY
 35TH & 36TH STORY
 36TH & 37TH STORY
 37TH & 38TH STORY
 38TH & 39TH STORY
 39TH & 40TH STORY
 40TH & 41ST STORY
 41ST & 42ND STORY
 42ND & 43RD STORY
 43RD & 44TH STORY
 44TH & 45TH STORY
 45TH & 46TH STORY
 46TH & 47TH STORY
 47TH & 48TH STORY
 48TH & 49TH STORY
 49TH & 50TH STORY
 50TH & 51ST STORY
 51ST & 52ND STORY
 52ND & 53RD STORY
 53RD & 54TH STORY
 54TH & 55TH STORY
 55TH & 56TH STORY
 56TH & 57TH STORY
 57TH & 58TH STORY
 58TH & 59TH STORY
 59TH & 60TH STORY
 60TH & 61ST STORY
 61ST & 62ND STORY
 62ND & 63RD STORY
 63RD & 64TH STORY
 64TH & 65TH STORY
 65TH & 66TH STORY
 66TH & 67TH STORY
 67TH & 68TH STORY
 68TH & 69TH STORY
 69TH & 70TH STORY
 70TH & 71ST STORY
 71ST & 72ND STORY
 72ND & 73RD STORY
 73RD & 74TH STORY
 74TH & 75TH STORY
 75TH & 76TH STORY
 76TH & 77TH STORY
 77TH & 78TH STORY
 78TH & 79TH STORY
 79TH & 80TH STORY
 80TH & 81ST STORY
 81ST & 82ND STORY
 82ND & 83RD STORY
 83RD & 84TH STORY
 84TH & 85TH STORY
 85TH & 86TH STORY
 86TH & 87TH STORY
 87TH & 88TH STORY
 88TH & 89TH STORY
 89TH & 90TH STORY
 90TH & 91ST STORY
 91ST & 92ND STORY
 92ND & 93RD STORY
 93RD & 94TH STORY
 94TH & 95TH STORY
 95TH & 96TH STORY
 96TH & 97TH STORY
 97TH & 98TH STORY
 98TH & 99TH STORY
 99TH & 100TH STORY

COLUMBIA

Scale of Feet.

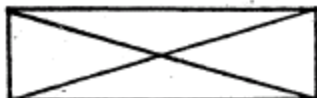


The wealth of historical detail found on Sanborn Company maps dating from the turn of the century is sometimes clouded by the abbreviations used at that time. The following list was developed by the publisher to help unravel the occupancy and usage associated with the structures. This list is neither complete nor totally correct; it serves only as a guide. Minor variations due to regional usage of some terms have been encountered. An example is the use of "Chine" and "Chinese" interchangeably. There is also some uncertainty about abbreviations such as "S" and "Sto"--there is some evidence that they had multiple uses, but only among maps made by different survey teams in divergent locations and years.

B. & S.	Boots & Saddles
Bl. Sm.	Blacksmith
B.C.	Brick Chimney
Chop Ho.	Chop House (an eating place)
Clo.	Clothing
D.	
Dw'g. }	Dwelling
D.G.	Dry Goods
F.B.	Female Boarding = Bordello
Furne.	Furniture
Gen'l S.	General Store
Gro.	Grocery
Ho.	House, <u>not</u> hotel. (Ware Ho., Out Ho., Hose Ho., etc.)
Hdwe }	
Hrdwe }	Hardware
Hyd.	Hydrant
Mill'y	Millinery
Off.	Office
P.O.	Post Office
R.C.	Roman Catholic
M.E.	Methodist-Episcopal
Sal.	Saloon
S.	Store; Storage
S.P.	Stove Pipe
Sta.	
Staty. }	Stationery
Stge.	Storage (several variations)
Vac.	Vacant
W.Ho.	Ware House = Warehouse. (also Wash House)

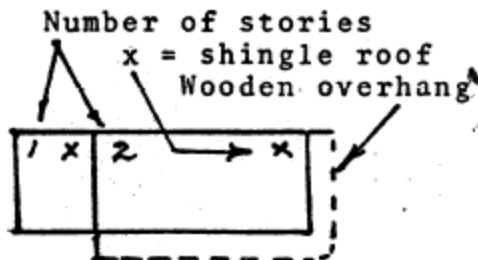
A = Automobile
(Garage)

CL = Cloth Lined
C.B.=Concrete Block



Barn or Stable

Some common symbols:



T.C. = Terra Cotta
Chimney

Map Abbreviations

A	Automobile (usually designates the location of a garage)	Confec'y	Confectionary (candy store)
A in B	Automobile located in basement	Constr'n	Construction
AS	Automatic sprinkler	Corp'n	Corporation
Abv	Above	D	Dwelling
ACS	Automatic chemical sprinkler	DH	Double (fire) hydrant
AFA	Automatic fire alarm	DG	Dry goods
Agr	Agricultural	Drs	Doctor's office
Appts	Apparatus	Dwg	Dwelling
Apts	Apartments	E	Open elevator
AsbCl	Asbestos clad	EFl	Each Floor
Att'd	Attended	EI	Electric
Aud'it'm	Auditorium	Elec	Electrician
AutoHo	Automobile house, or garage	Eng	Engine
	Basement, boiler or occasionally brick	Ent	Entertainment
B	Boots and shoes	Episc'l	Episcopal
B&S	Benevolent & Protective Order of Elks	ESC	Elevator with self-closing traps
BPOE	Blacksmith	ET	Elevator with traps
Bsm	Building	Exch	Telephone exchange
B'ld'g	Boiler	Expr	Express (as used to designate a delivery service)
B'lr.	Basement		Flat (as used to designate a delivery service)
B's't	Bakery	F	Fire alarm
Bak'y	Balcony	FA	Fire alarm
Balc	Baptist	FE	Fire escape
Bap	Barrel	FPump	Fire pump
Bbl	Barrels	Fill'gSta	Filling station, or gas station
Bbls	Brick enclosed elevator	Fl	Floor
BE	Billiards	FrAttic	Frame constructed attic
Bill'ds	Blacksmith	Frat	Fraternity
BISm	Blacksmith	Fur	Furnishings
BlkSm	Basement	Furn'g	Furnishings
Bst	Cement brick or concrete block construction	Furne	Furniture
CB	Concrete brick or cement block construction	GAR	Grand Army of the Republic
CBr	Capacity	GT	Gasoline tank
Cap'cy	Carpenter	Gal	Gallery
Carptr	Concrete enclosed elevator with traps	Gall	Gallery
CBET	Chemical	Gall'y	Gallery
Chem	Chinaware or porcelain	Gen'l	General (as used to designate a general store)
Chinaw	Chinese	Gents	Gentlemen's
Chine	Clad	Greas'g	Greasing
Cl	Clothing	Gro	Grocery or groceries
Clo	Company	HPFS	High pressure fire service
Co	Composition construction (i.e. stucco) or compressor	H'dw	Hardware
Comp	Concrete	Hack	Hackney or delivery service
Conc	Confectionary (candy store)	Hardw	Hardware
Conf'y		Ho	Hotel or house (as used to designate a warehouse)
		Htr	Heater

Hyd	Hydrant	Rf	Roof
ICRR	Illinois Central Railroad	Rm	Room
Imp	Implements	S	Store
Ins	Insurance	SA	Spark arrestor
Insts	Instruments	SVac	Store portion of building is vacant
IrCl	Iron clad	Sal	Saloon
KofC	Knights of Columbus	Sky'ts	Skylights
Lab	Laboratory	Sm	Smith, as in gunsmith or blacksmith
Lodg'g	Lodging	SmHo	Smokehouse
Luth	Lutheran	Sp'k'l'rs	Sprinklers
Luth'n	Lutheran	St'ge	Storage
ME	Methodist Episcopal	St'y	Story
Mach'y	Machinery	Sta	Station
Mak'r	Maker	Stat'y	Stationery
Manf'y	Manufactory or factory	TH	Triple (fire) hydrant
Mdse	Merchandise	Tel	Telephone
Mfy	Manufactory or factory	Tenem'ts	Tenements
Mill'y	Millinery		Tile enclosed elevator with self-
Mkg	Making	TESC	closing traps
Mo	Motor	Tinw	Tinware
NS	Not sprinklered	Trimm'g	Trimming
OU	Open under	U	Upright
Off	Office	Up	Upright
PO	Post office	VP	Vertical pipe
Paint'g	Painting	Vac	Vacant
PatMed	Patent medicines	Ven'd	Veneered
Plumb'g	Plumbing	Ven'r'd	Veneered
Print'g	Printing	W	Ware, as in warehouse or wareroom
QH	Quadruple (fire) hydrant	WC	Water closet or toilet
RC	Roman Catholic	WG	Wire glass skylights
R'f	Roof	WHo	Warehouse
R'm	Room	WPA	Works Progress Administration
Rep	Repair	W'ks	Works
Rep'g	Repairing	Whol	Wholesale
Repos'ry	Repository	Wkg	Working
Restr't	Restaurant	Woodwkg	Woodworking